

Mechanical Inspectors

Code Compliance Alert 17-002

May 26, 2017

2105 Michigan Residential Code (MRC)
Chapter 1803 – Chimney & Vent Connectors and
Chapter 24 – Fuel Gas

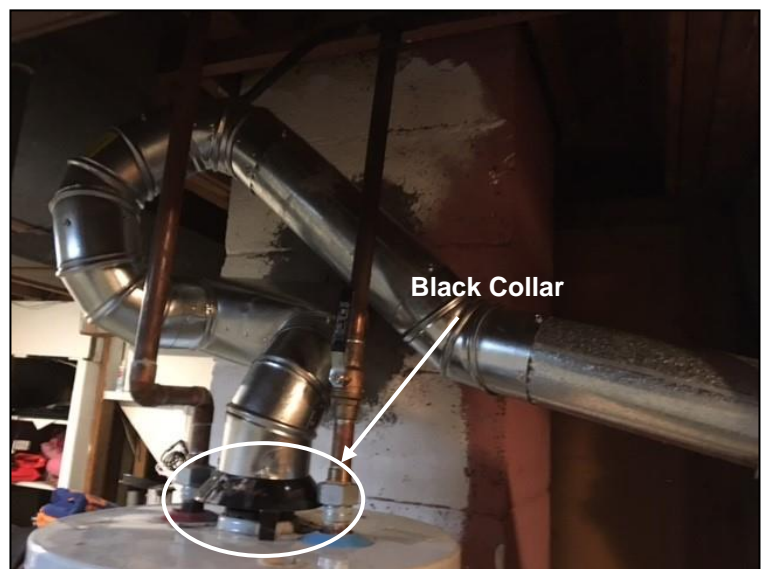
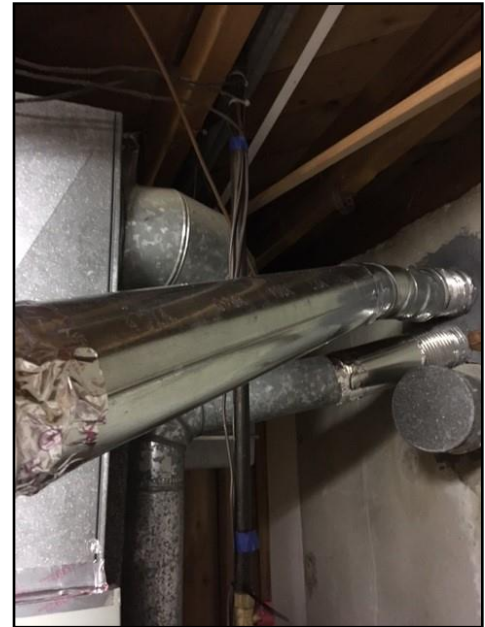
M1803.3 Installation

- Connectors shall be as short and straight as possible and installed with a slope of *not less than* 1/4 inch (6 mm) rise per foot of run. (emphasis added)
- Connectors shall be securely supported and joints shall be fastened with sheet metal screws or rivets.

The black collar on top of the heater does not connect piping; it is slipped over the pipe at the top of the furnace to prevent the weight of the vent piping from putting stress on the inducer motor. The contractor should follow the vendor's installation instructions or contact the vendor for minimums and maximums.

Liner installation instructions are clear. Chimney liner connections must be made outside the chimney and the liner needs to be sleeved with the provided sleeve where it enters the chimney to protect from mortar corrosion. Also, the sleeve has the specs for the liner and should be visible.

M1803.4.3 Connection to masonry fireplace flue. A connector shall extend from the *appliance* to the flue serving a masonry fireplace to convey the flue gases directly into the flue. The connector shall be accessible or removable for inspection and cleaning of both the connector and the flue. *Listed* direct-connection devices shall be installed in accordance with their *listing*.



Mechanical Inspectors Code Compliance Alert 17-002

The following is from an experienced and well-respected Mechanical Contractor:

“There is probably almost nothing with these installations that are compliant with code, appliance installation instructions, or flue liner installation instructions. It may be OK to give a correction notice on picture 1, but pictures 2 and 3 should have the gas shut off. At the very least, have the installer prove the appliance actually vents according to code and installation instructions.”

The following code references are from 2015 Michigan Residential Code, Chapter 24, Fuel Gas.

- **G2425.5 (501.5) Abandoned inlet openings.** Abandoned inlet openings in *chimneys* and vents shall be closed by an *approved* method.

What is shown is too easy to have a homeowner use down the road. We remove the pipe and either fill the hole with brick and cement or cement a cap into the hole.

- It appears there are two flue liners in the same chimney. I do not see sleeves around the flue liners. I would need to see the installation instructions to verify they are installed correctly and if you can put 2 liners in 1 chimney. See G2428.2.7
- As the installer “terminated” the liner and then connected a single wall “connector, this installation is a vent with connector installation and not a vent connected directly to an appliance.
- Need to consult venting tables G2428.2(1) or G2428.2(2) to determine if single wall pipe can be used for the vent connector. Verify proper gauge pipe is use if allowed. These tables also show maximum lateral length allowed (See G2428.2.3 for offsets with elbows).
- “Duct tape” is not rated to be used on “Vents”.
- Would need furnace manufacturers installation instructions as well as B vent manufacturers installation instructions for additional venting rules. See G2427.10.7 for Slope including no dips or sags. I believe most manufacturers require a 4” straight piece of vent on the draft hood before using an elbow.

Mechanical Inspectors Association of Michigan - Metropolitan Mechanical Inspectors Association

560 Barrington Rd., Grosse Pointe Park, MI 48230

Phone 248-649-5443 • Fax 313-483-7192

s_schippert@yahoo.com • mechanicalinspector.com